

ECO LIFT ASSEMBLY MANUAL

WARRANTY DISCLAIMER

READ BEFORE USING PRODUCT

This product is a specialized lift designed exclusively for lightweight competition vehicles, specifically those weighing less than 4500 pounds and used off-highway. It is important to note that DirtCarLift.com does not have direct knowledge of the individuals who will utilize this lift or the specific contexts in which it will be employed.

This lift is a component that should be integrated into a larger system. It is crucial to use additional safety equipment, such as jack stands, which are not supplied with this product. Furthermore, only individuals who are proficient in operating hydraulic lifts should handle this equipment.

Due to the variable nature of how this lift may be used, DirtCarLift.com cannot provide any warranty, whether explicit or implied. The responsibility to determine the appropriateness of this lift for a particular racing application rests solely with the end user. It is imperative to understand that this lift is not designed for, nor should it be used in, vehicles that are driven on public highways. It has not been certified for such use. Improper use of this product could lead to severe injury or even fatality. The end user assumes all responsibility for any risks associated with the use of this lift



BEWARE OF:

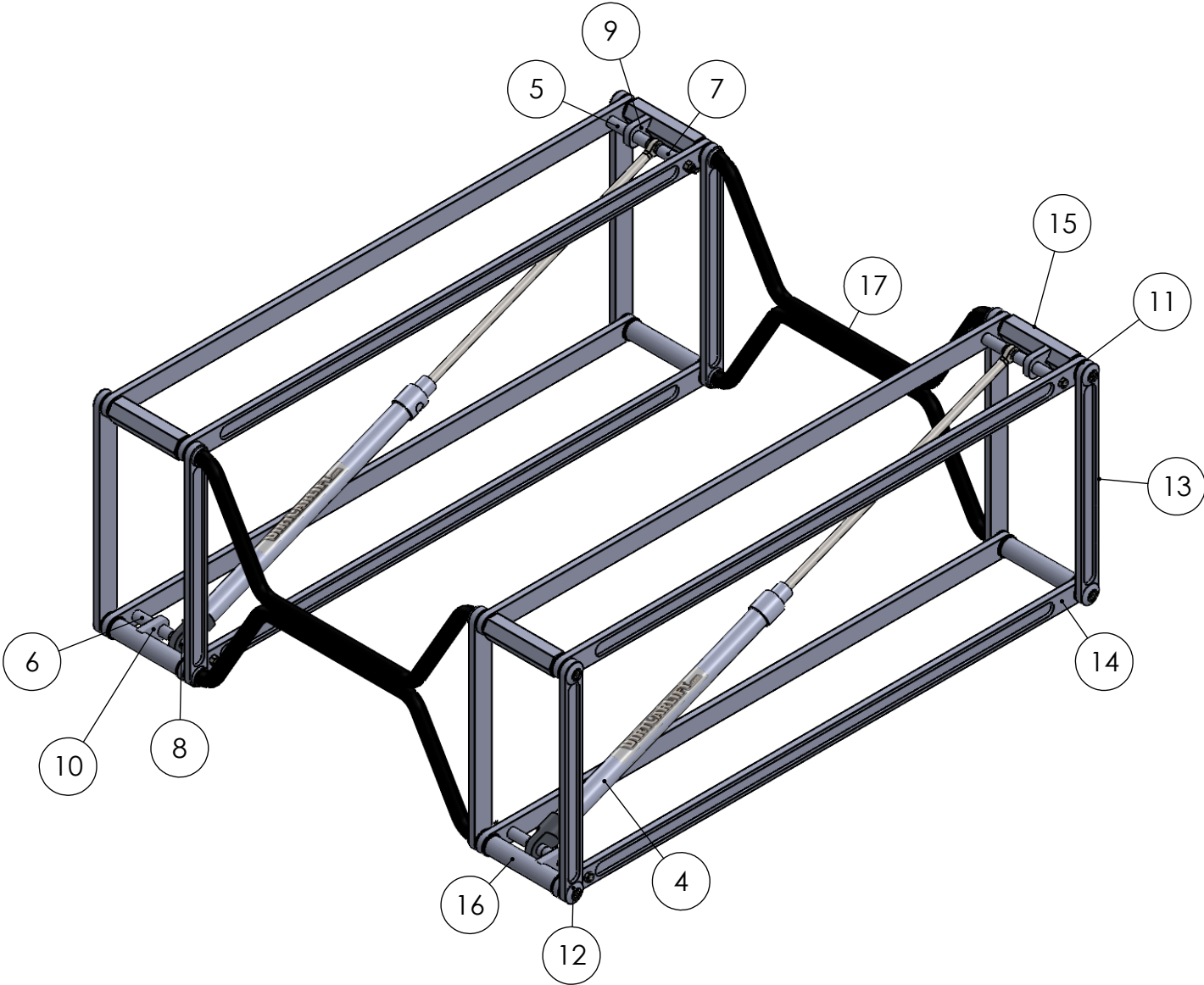
- PINCH POINTS
- OVER TIGHTENING FASTENERS
- STRIPPING FASTENERS
- INSUFFICIENT GREASING
- LOOSE PARTS
- LOSING PARTS



DO NOT:

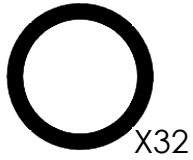
- EXCEED WEIGHT LIMIT OF 4000 POUNDS
- CUT INTO OR SHAVE OFF ANY MATERIAL FROM THE PRODUCT
- REPLACE OR CHANGE PARTS, UNLESS OTHERWISE INSTRUCTED BY MANUFACTURER
- OPERATE A DAMAGED PRODUCT
- INSTALL OR USE PRODUCT UPSIDE DOWN
- EXCESSIVELY DRIVE BOLTS AFTER THEY HAVE BEEN FULLY SEATED
- ASSEMBLE ANY PARTS WITHOUT READING THE NOTES
- ASSEMBLE TIGHT FIT PARTS WITHOUT PROPERLY GREASING THEM
- USE INCOMPATIBLE GREASE OR HYDRAULIC FLUID WITH THE LIFT

ITEM NO.	PART NUMBER	QTY.
1	1/4-20 X 5/8 FLAT HEAD CAP SCREW	8
2	3/8" X8" HEX HEAD SCREW	4
3	3/8-16 LOCKNUT	4
4	HYDRAULIC CYLINDERS	2
5	LONG CYLINDER SPACER (3.625 INCHES)	2
6	LONG CYLINDER SPACER W/GROOVE (3.79 INCHES)	2
7	SHORT CYLINDER SPACER (2.00 INCHES)	2
8	SHORT CYLINDER SPACER W/GROOVE (2.15 INCHES)	2
9	CYLINDER BOLT SUPPORT TOP (HEX)	2
10	CYLINDER BOLT SUPPORT BOTTOM (ROUND)	2
11	BLACK SPACER	32
12	ENDCAP	8
13	SHORT LADDER	8
14	LONG LADDER	8
15	HEX 5.875"	4
16	TUBING SPACER 5.875"	4
17	XBAR	2

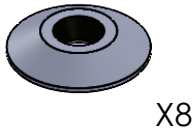


GRAPHICS

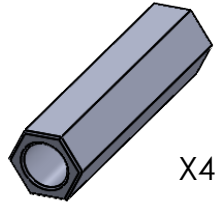
1: BLACK SPACER



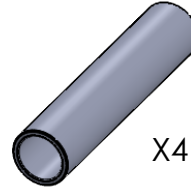
12: ENDCAP



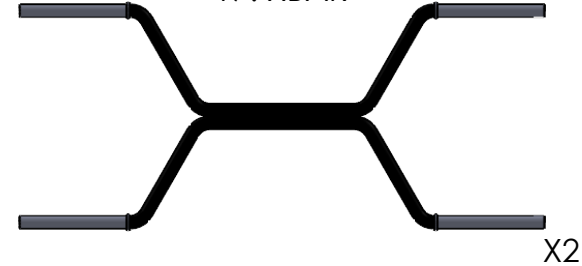
15: HEX 5.875



16: TUBE SPACER 5.875



17: XBAR



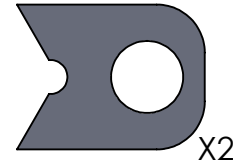
5: LONG CYLINDER SPACER (3.625 INCHES)



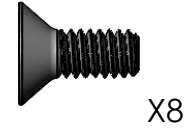
7: SHORT CYLINDER SPACER (2.00 INCHES)



9: CYLINDER BOLT SUPPORT TOP (HEX)



1: 1/4-20 X 5/8
FLAT HEAD CAP
SCREW



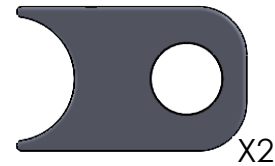
6: LONG CYLINDER SPACER
W/GROOVE (3.79 INCHES)



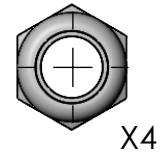
8: SHORT CYLINDER SPACER
W/GROOVE (2.15 INCHES)



10: CYLINDER BOLT SUPPORT
BOTTOM (ROUND)



3: 3/8-16 LOCKNUT



4: HYDRAULIC CYLINDERS



2: 3/8" X8" HEX HEAD SCREW



14: LONG LADDERS



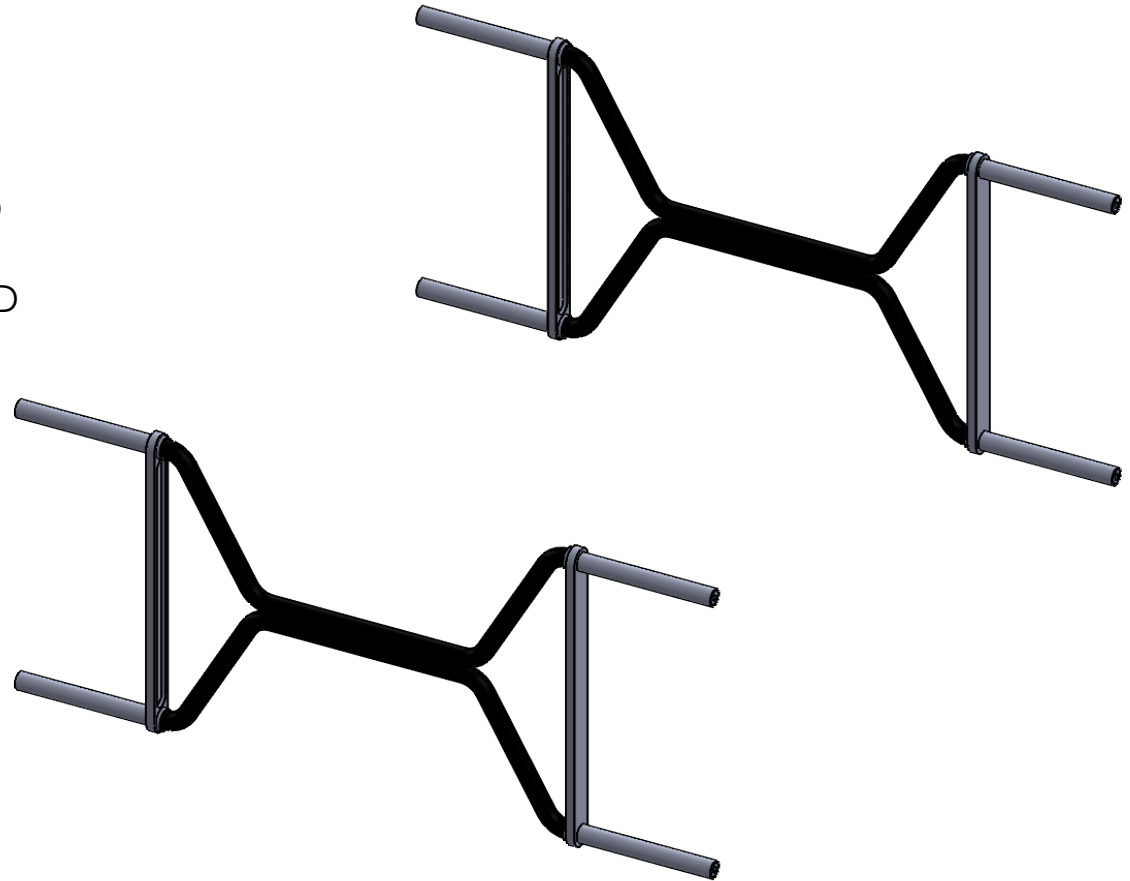
13: SHORT LADDERS



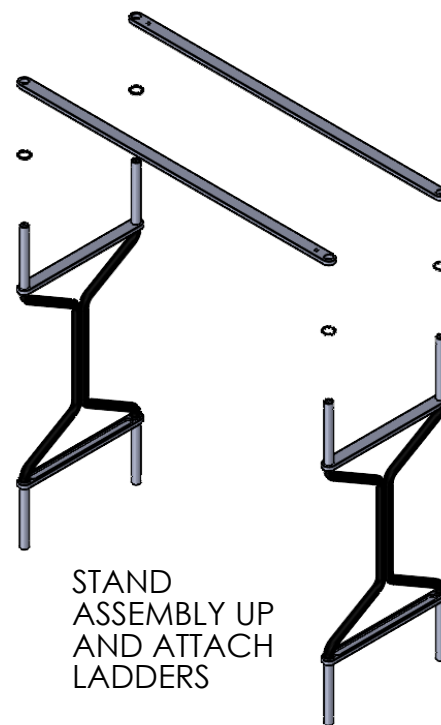
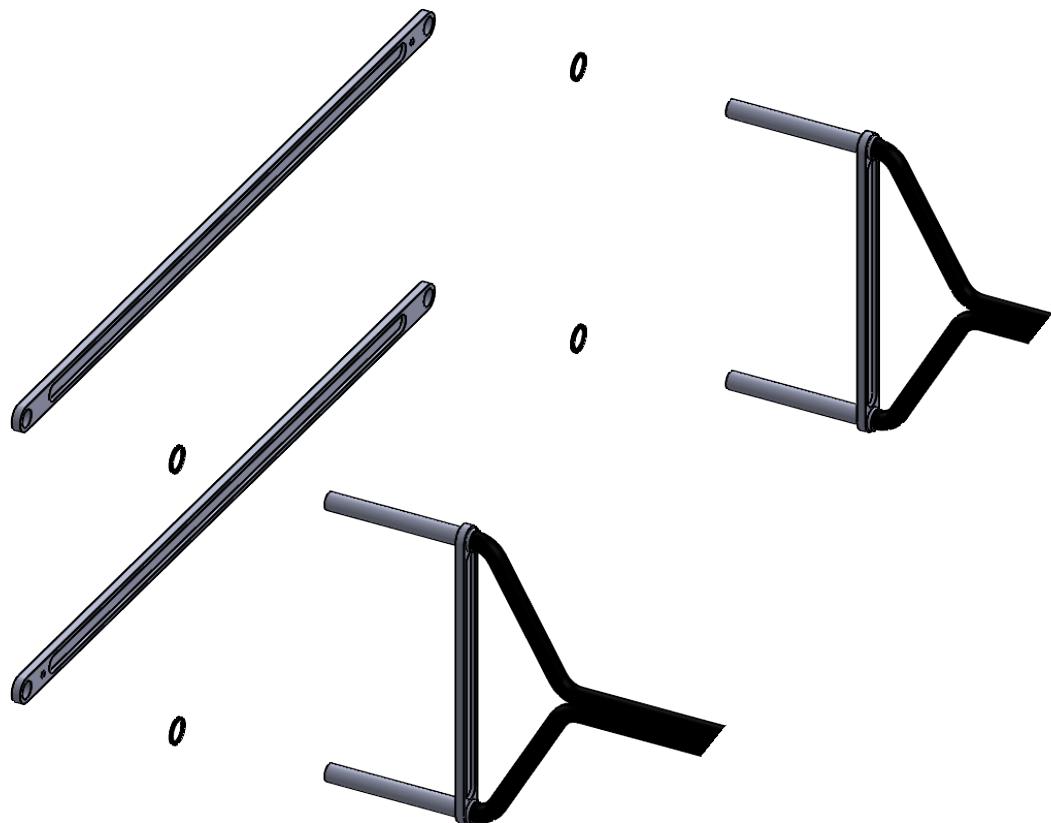
BEFORE YOU BUILD

- THIS DOES REQUIRE GREASE. ANY CHASSIS OR BEARING GREASE
- SORT PARTS TO MAKE IT EASIER TO ASSEMBLE
- GET ALL THE TOOLS YOU NEED
 - 1/4 ALLEN WRENCH KEY
 - 3/16 ALLEN WRENCH KEY
 - 5/32 ALLEN WRENCH KEY
 - 1/8 ALLEN WRENCH KEY
 - 1/2 WRENCH
 - 9/16 WRENCH
 - 1/4 WRENCH
 - RUBBER Mallet
 - FLATHEAD SCREWDRIVER ANY SIZE
- MAKE SURE YOU HAVE A CLEAN WORKSPACE
- BE SURE TO GREASE BLACK SPACERS AND LADDER OPENING
- APPLY RED THREAD LOCK WHEN DIRECTED

1



2



STAND
ASSEMBLY UP
AND ATTACH
LADDERS

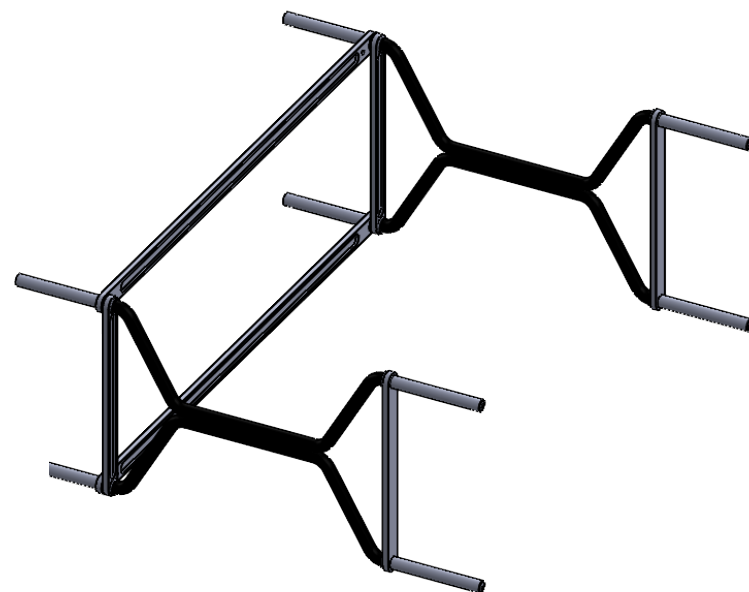
BLACK SPACER
LONG LADDER

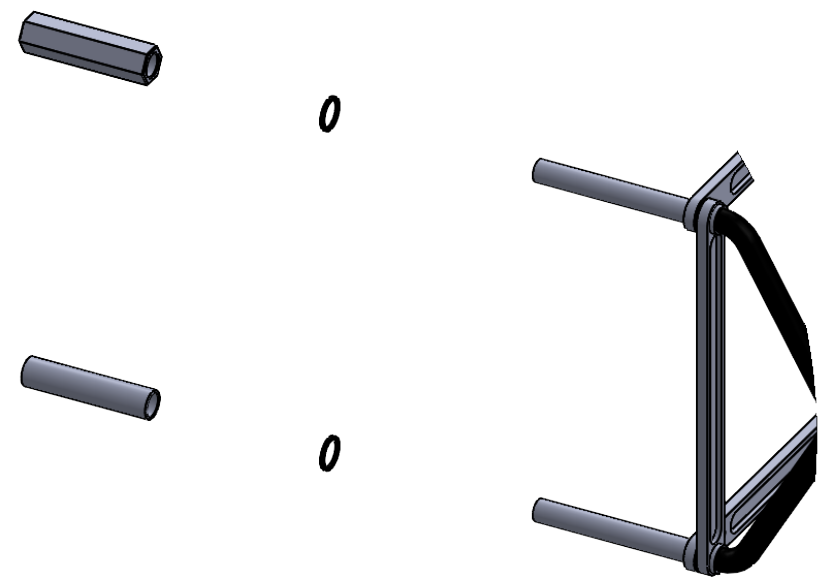
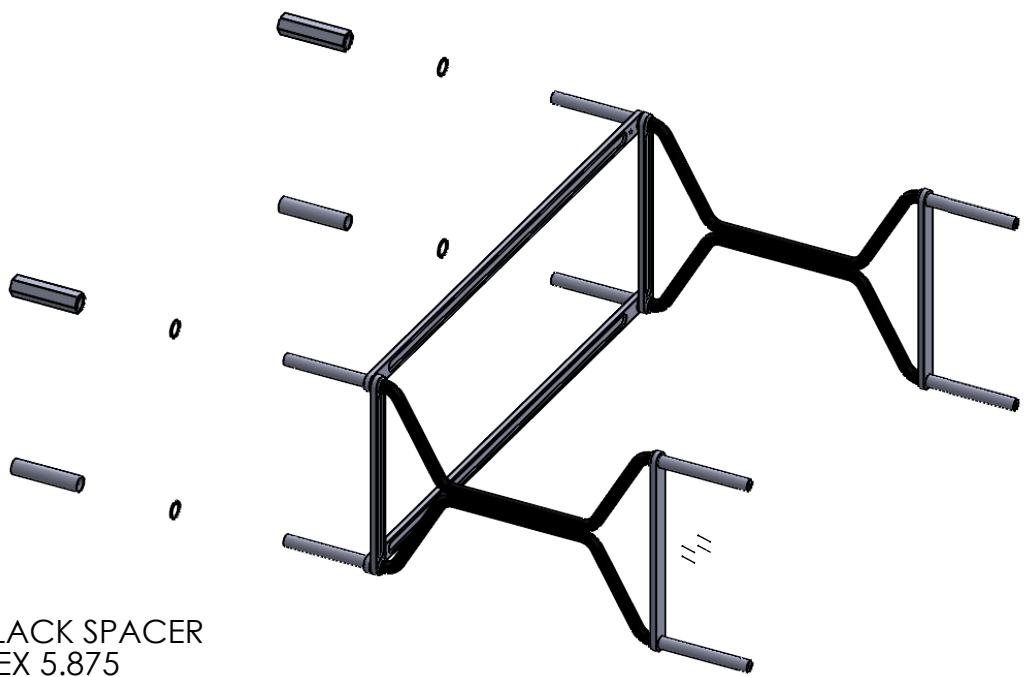


X4

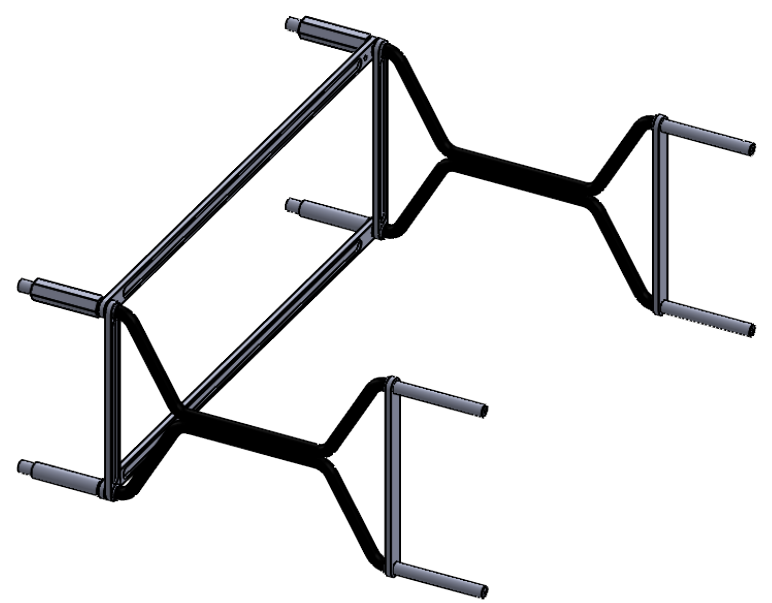
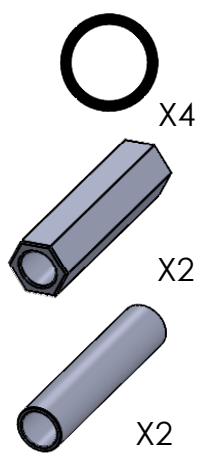


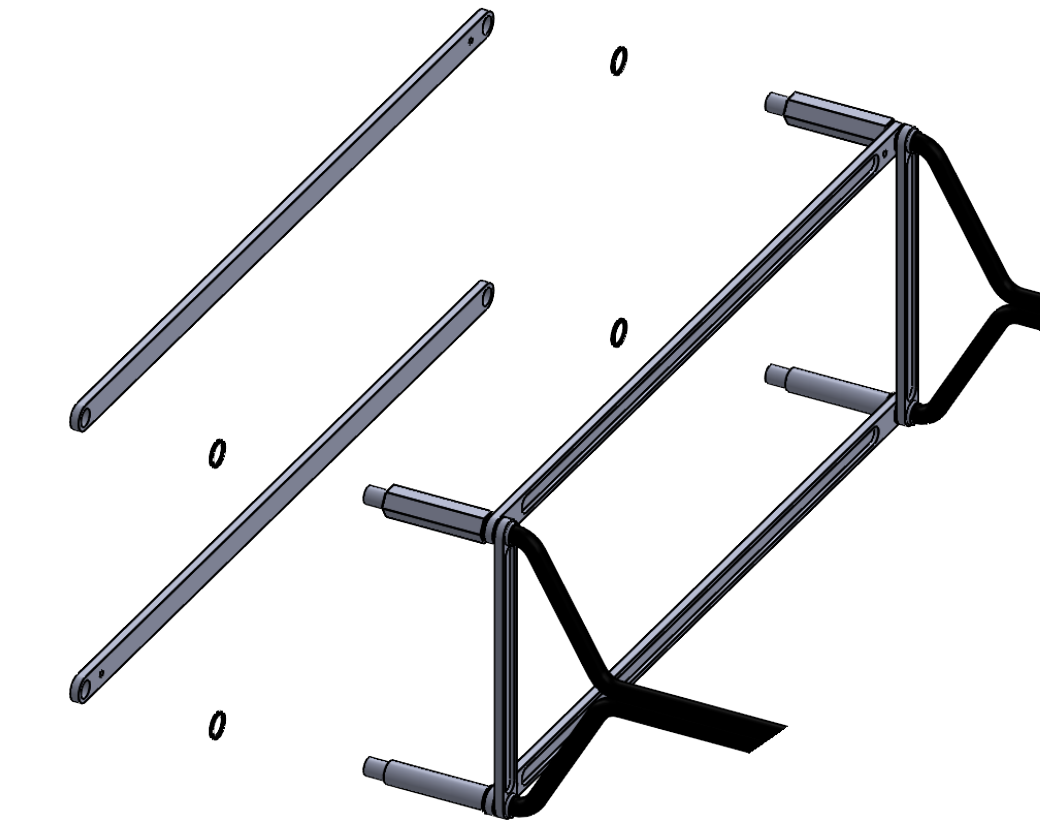
X2





BLACK SPACER
HEX 5.875
TUBE SPACER 5.875





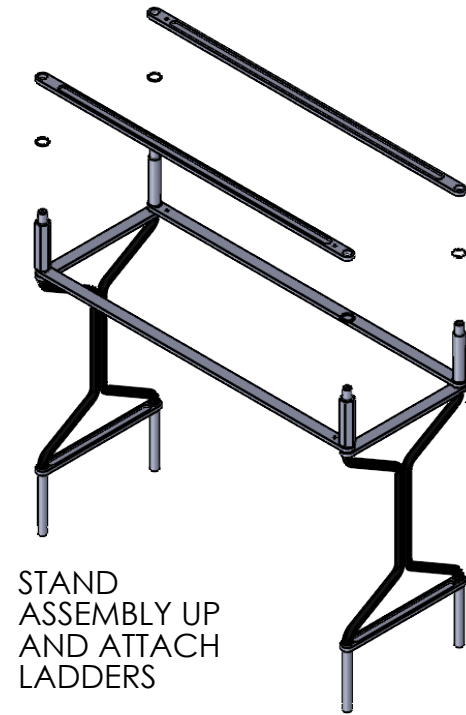
BLACK SPACER
LONG LADDER



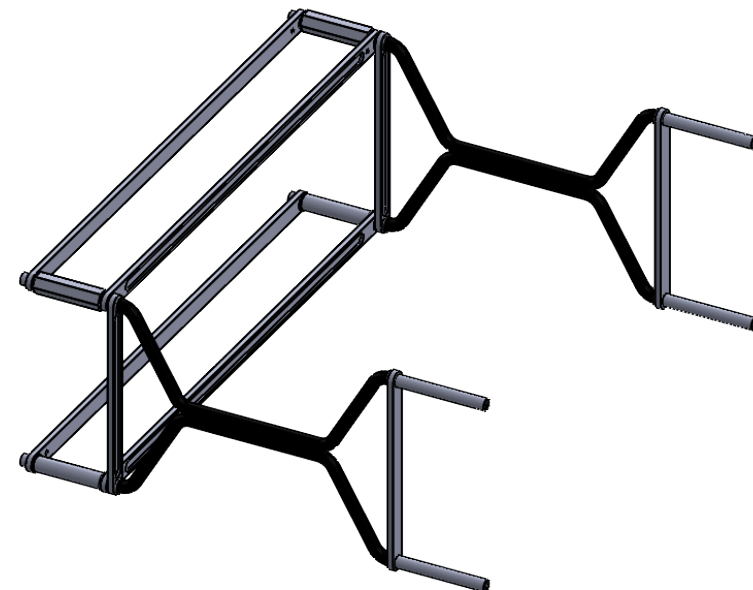
X4



X2

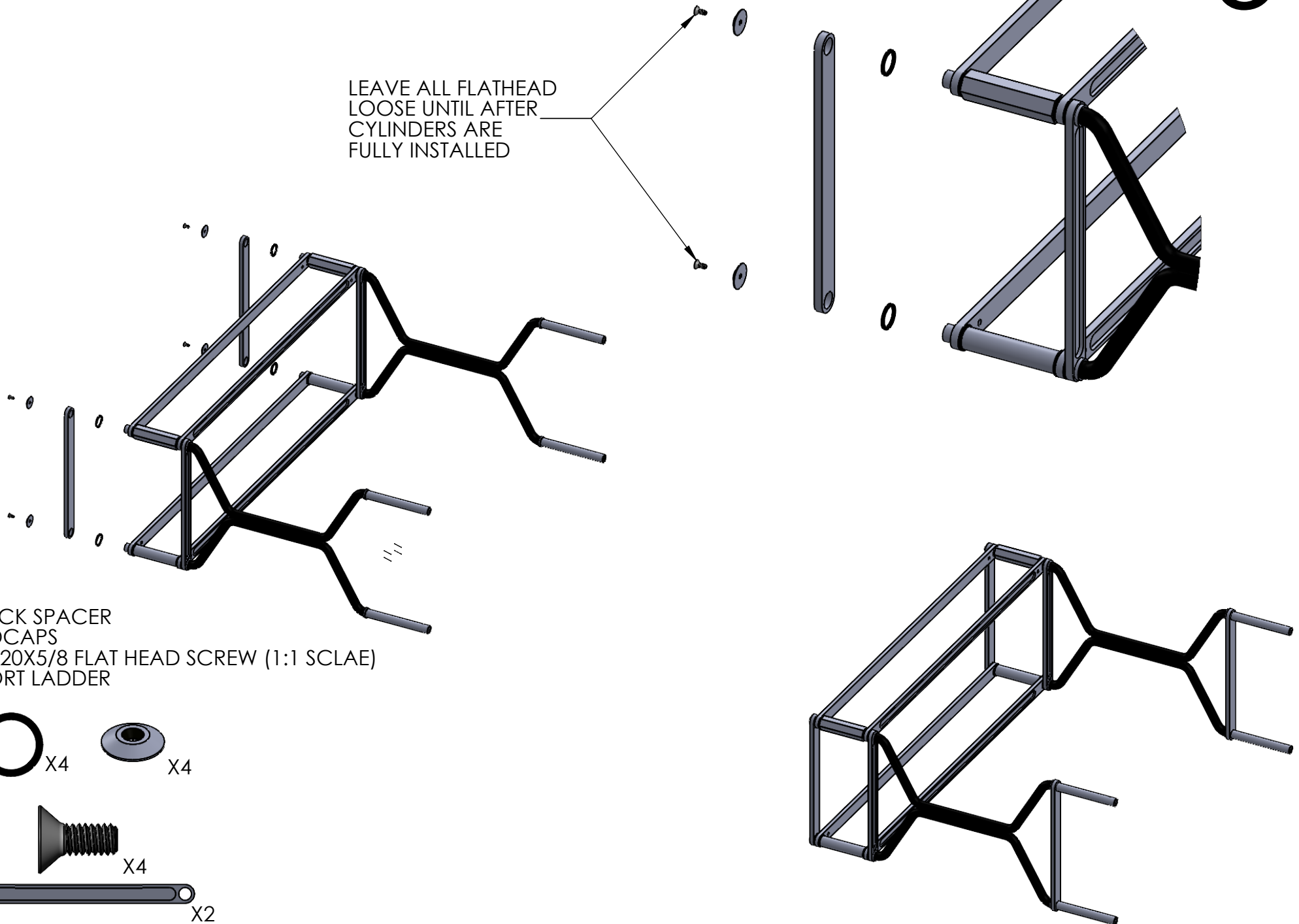
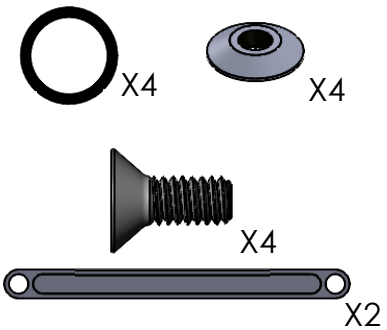


STAND
ASSEMBLY UP
AND ATTACH
LADDERS

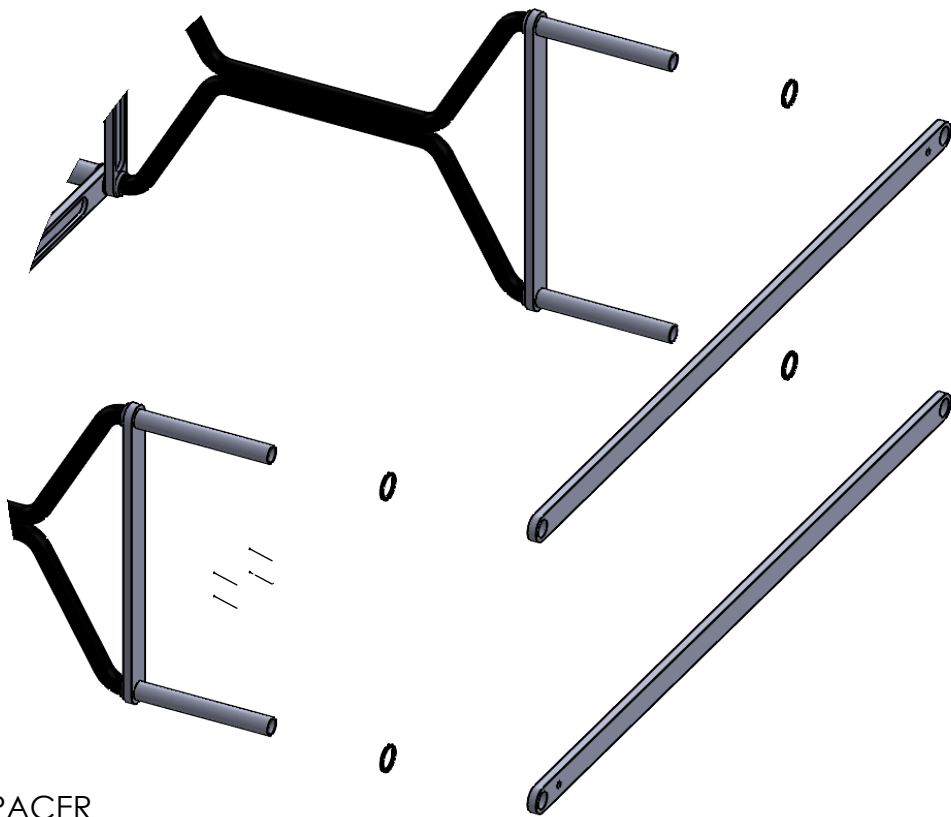


LEAVE ALL FLATHEAD
LOOSE UNTIL AFTER
CYLINDERS ARE
FULLY INSTALLED

BLACK SPACER
ENDCAPS
1/4-20X5/8 FLAT HEAD SCREW (1:1 SCLAE)
SHORT LADDER



6



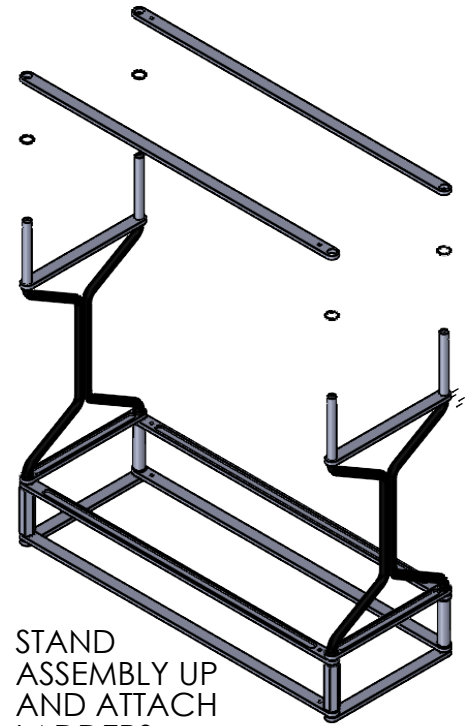
BLACK SPACER
LONG LADDER



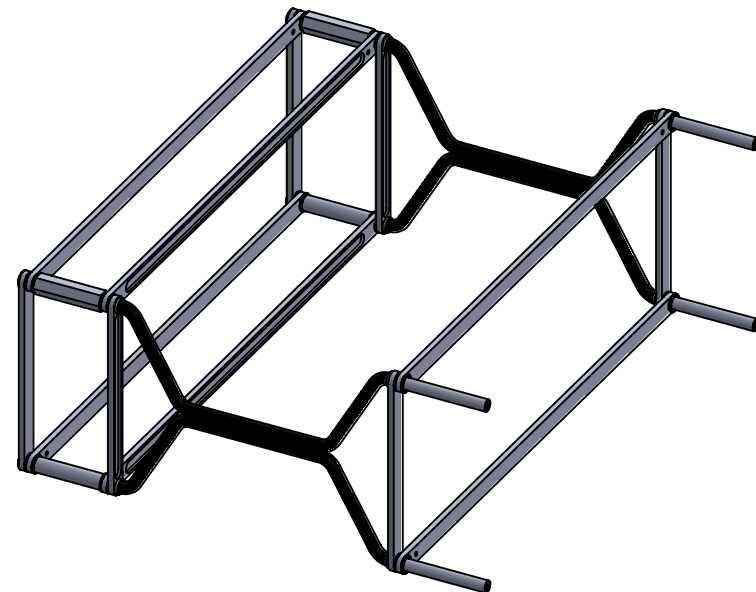
X4



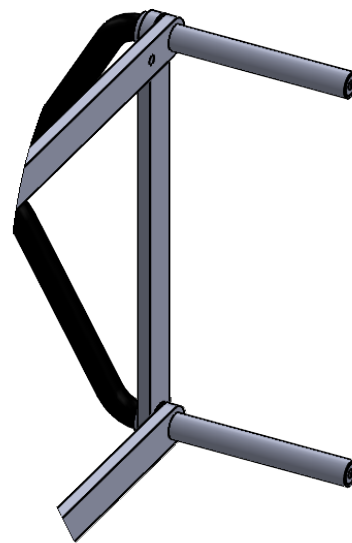
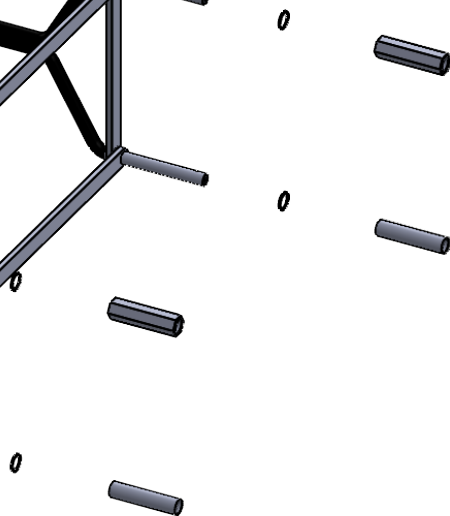
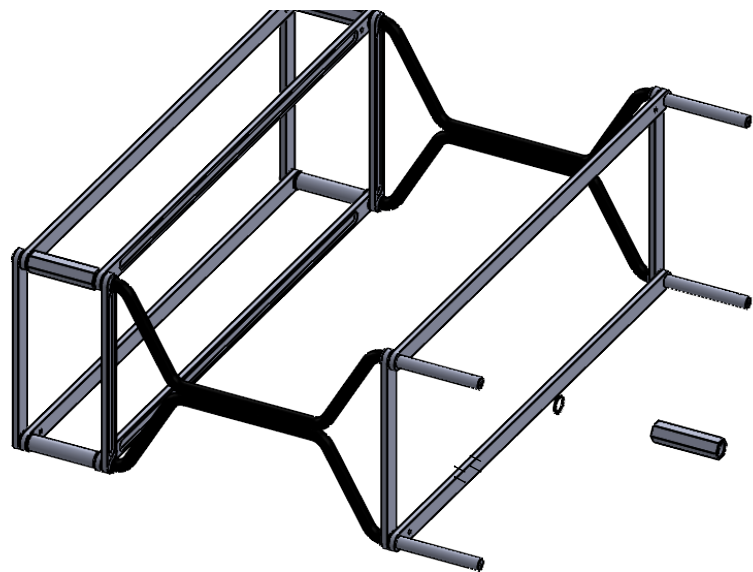
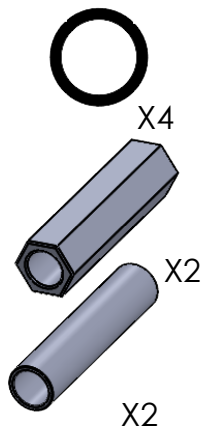
X2



STAND
ASSEMBLY UP
AND ATTACH
LADDERS



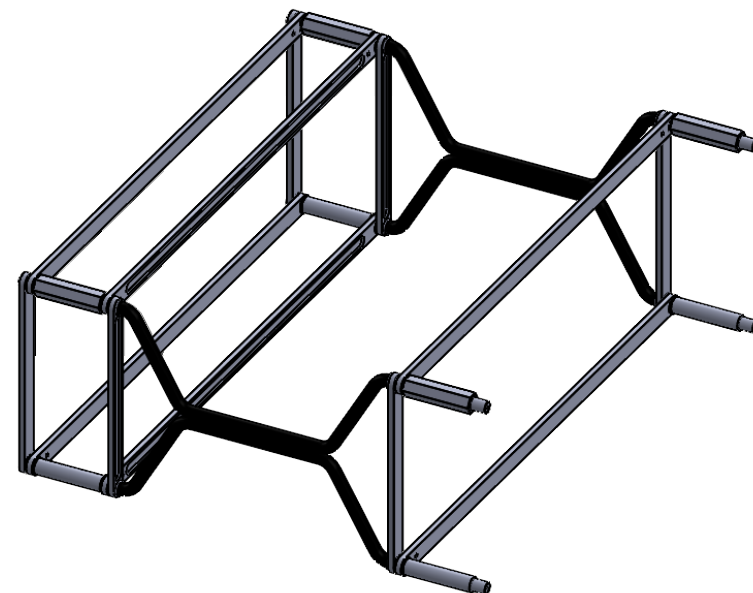
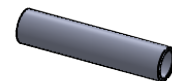
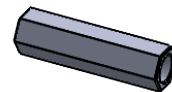
BLACK SPACER
HEX 5.875
TUBE SPACER 5.875



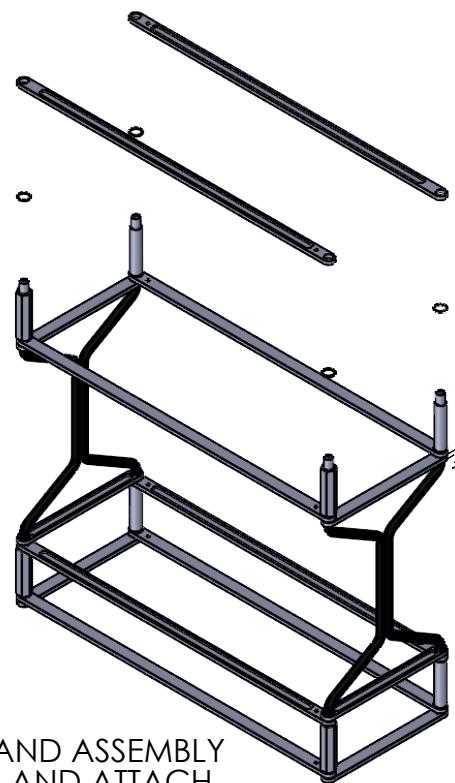
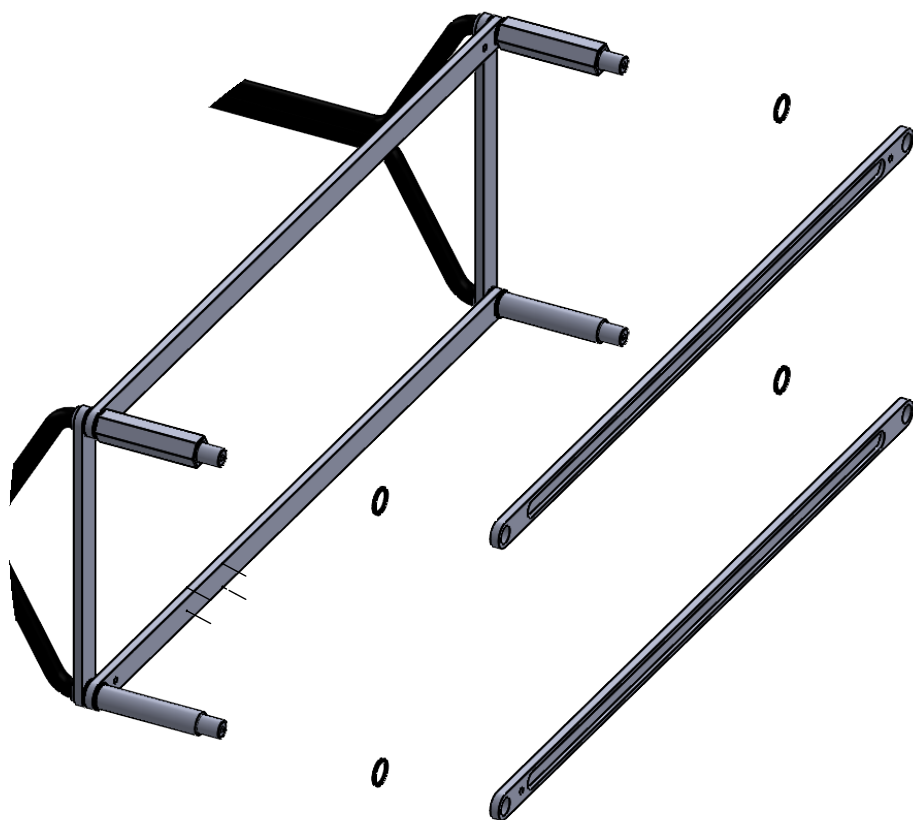
0

0

7

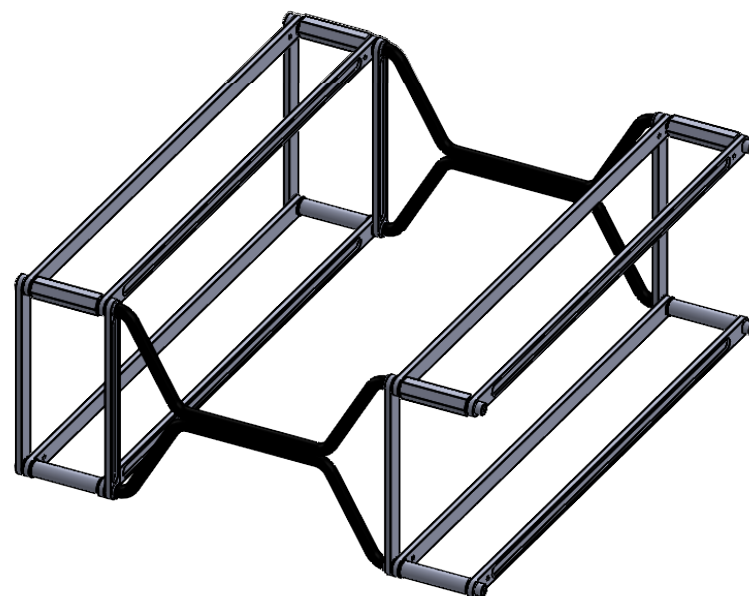


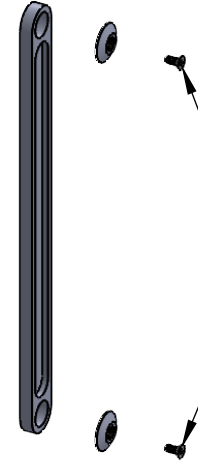
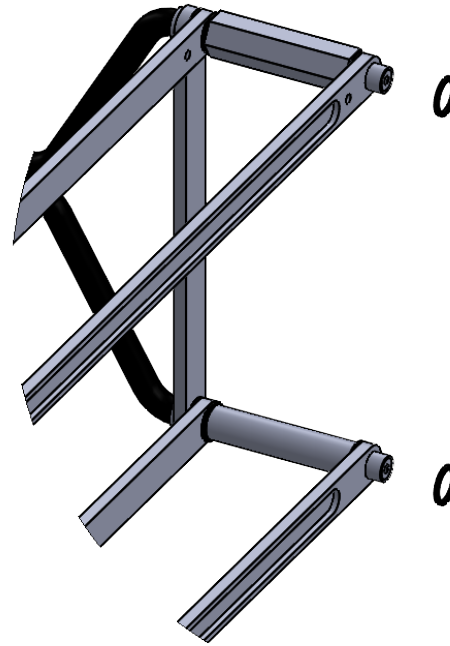
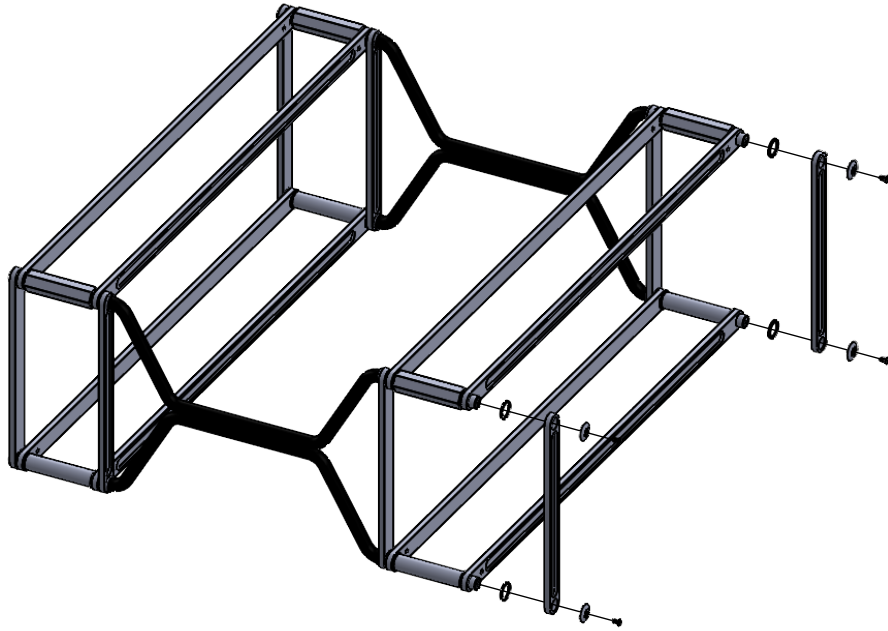
8



STAND ASSEMBLY
UP AND ATTACH
LADDERS

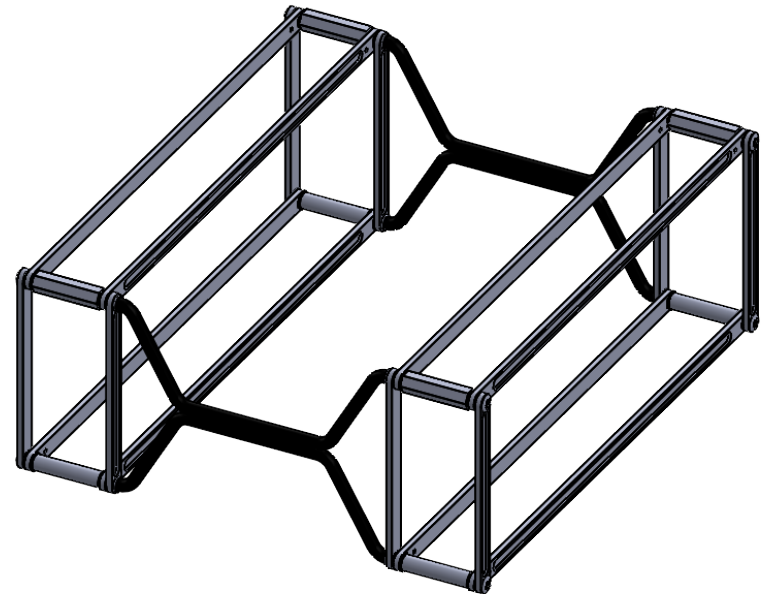
BLACK SPACER
LONG LADDER



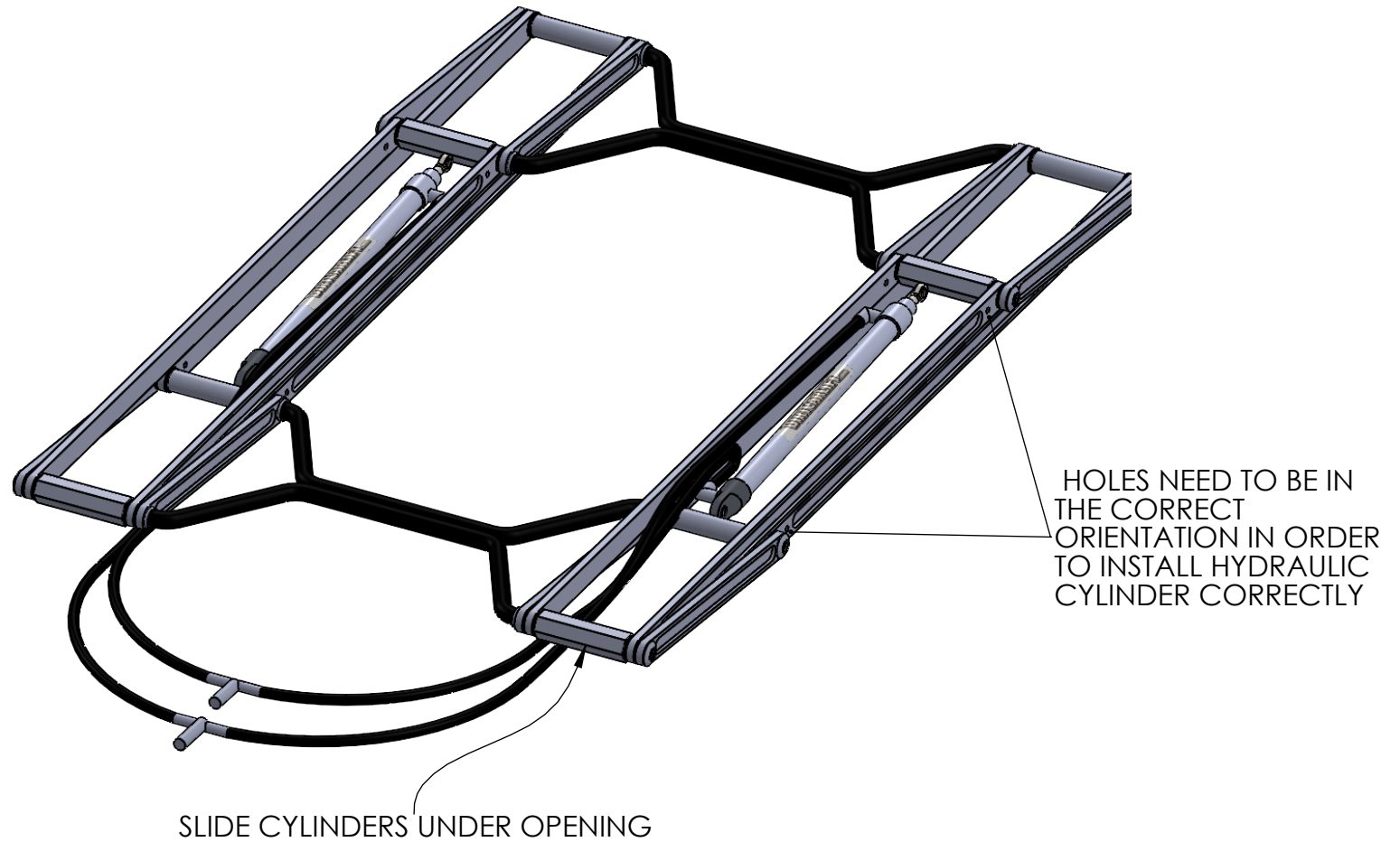


LEAVE FLATHEAD
SCREWS LOOSE
UNTIL
HYDRALUIC
CYLINDERS ARE
FULLY INSTALLED

BLACK SPACER
ENDCAPS
1/4-20X5/8 FLAT HEAD SCREW (1:1 SCLAE)
SHORT LADDER



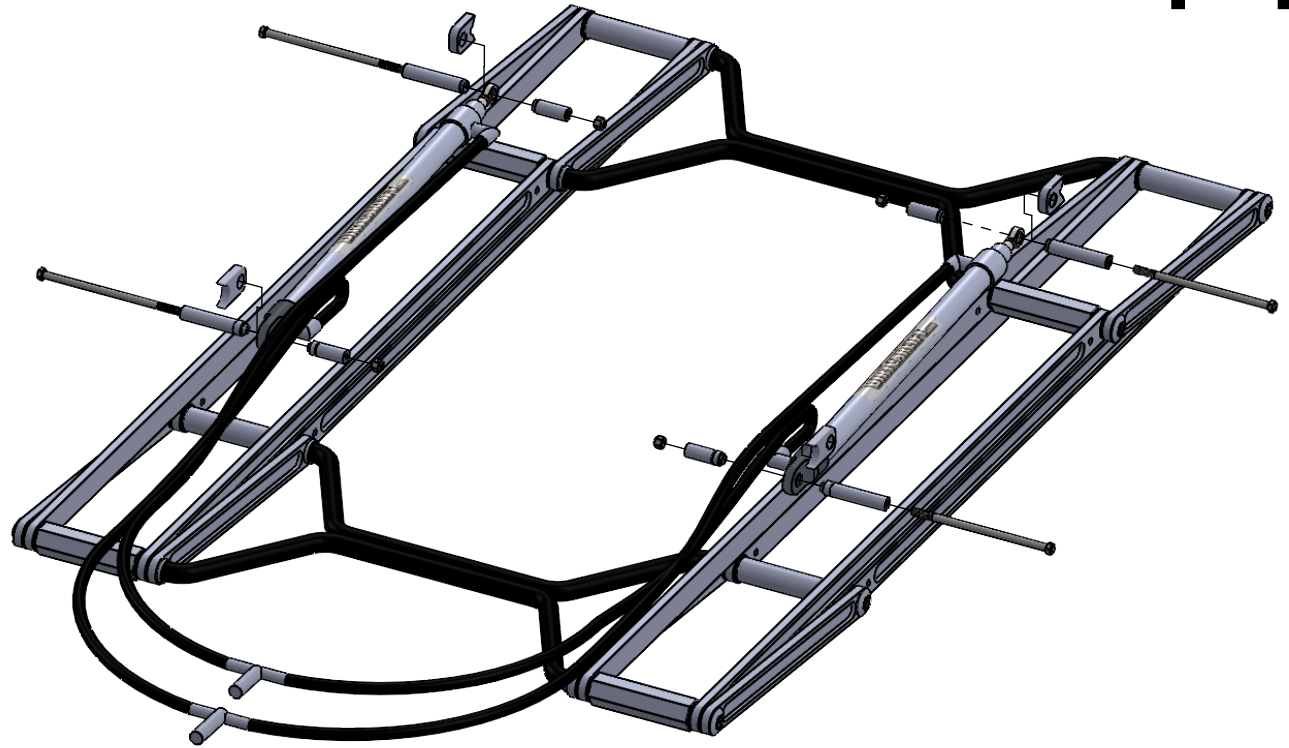
LAY ASSEMBLY FLAT



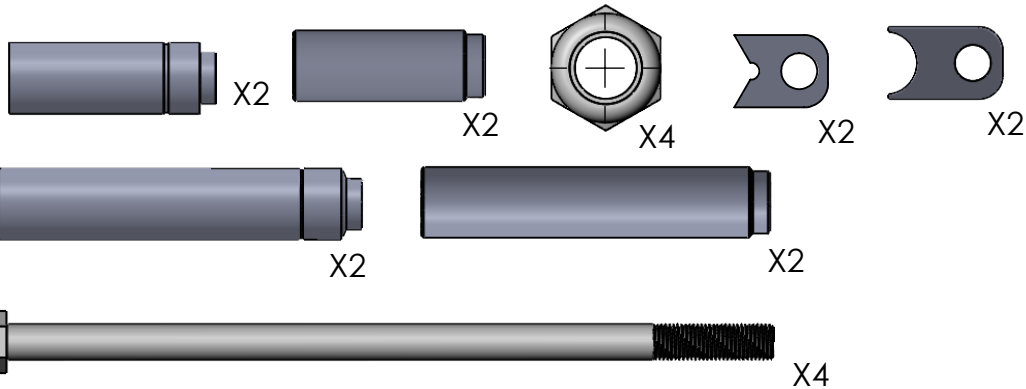
HYDRAULIC CYLINDER

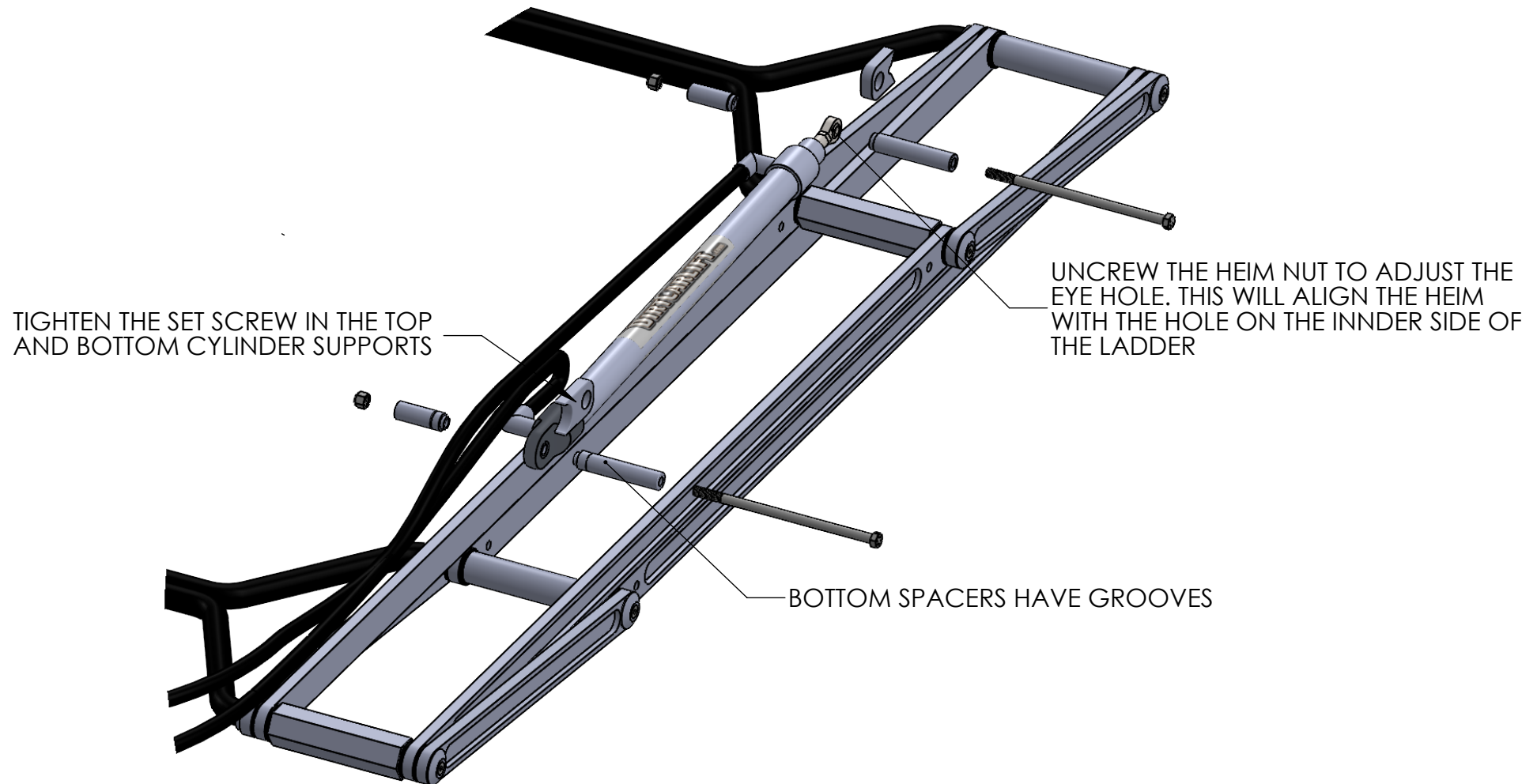


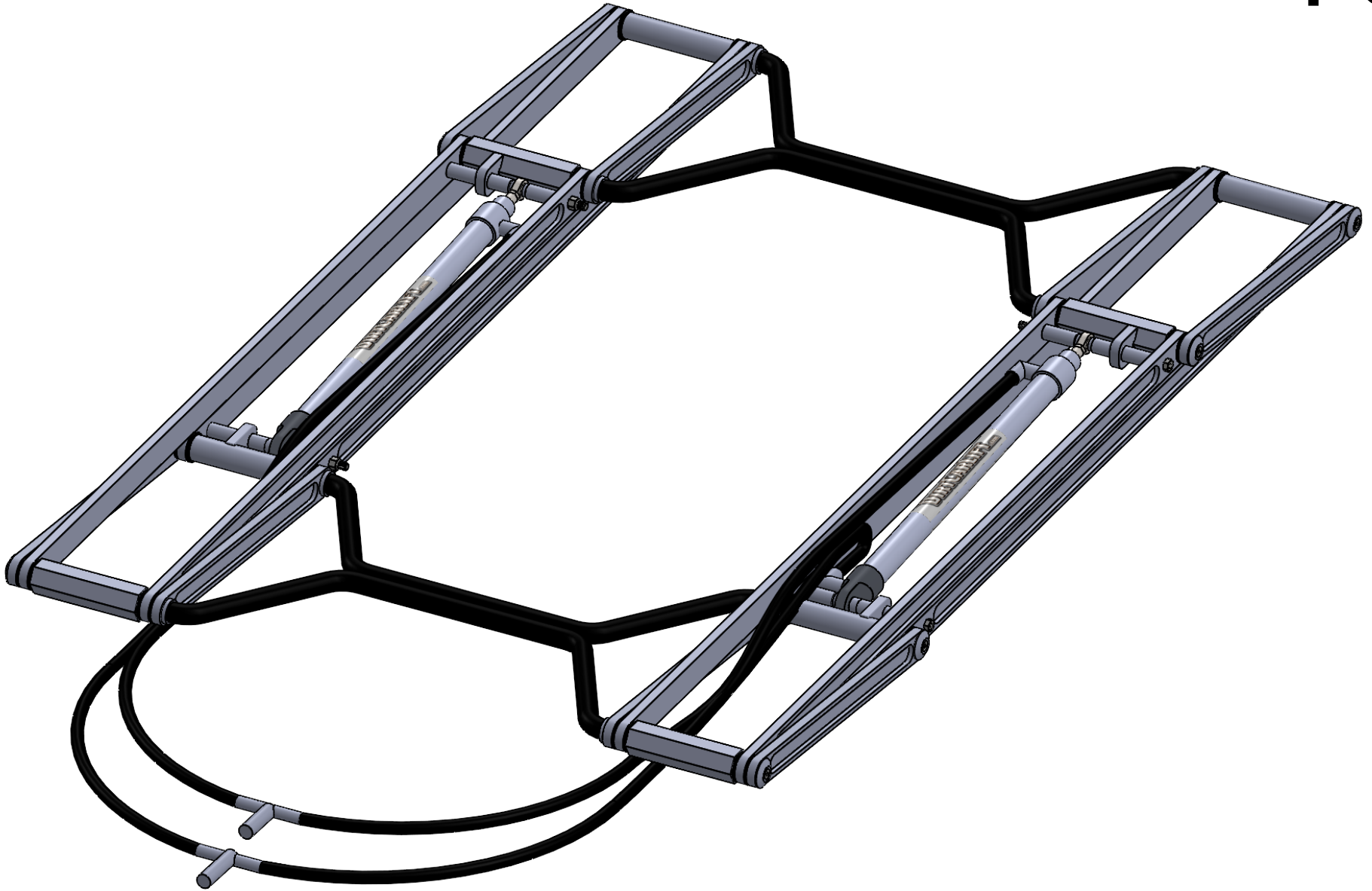
X2



- 3/8" HEX HEAD SCREW
- 3/8-16 LOCKNUT
- CYLINDER BOLT SUPPORTS BOTTOM
- CYLINDER BOLT SUPPORTS TOP
- LONG CYLINDER SPACER W/GROOVE (3.79 INCHES)
- LONG CYLINDER SPACER (3.625 INCHES)
- SHORT CYLINDER SPACER W/GROOVE (2.15 INCHES)
- SHORT CYLINDER SPACER (2.00 INCHES)
- HYDRAULIC CYLINDER







*APPLY **RED** THREAD LOCK TO ENDCAP BOLTS AND TIGHTEN STEPS FIVE AND NINE*

FAQ



BATTERY SPECIFICATIONS

LENGTH; 7.75" WIDTH 5.125" HEIGHT: 7.25"

CRANKING AMPS; 430

CCA; 340-350

BATTERIES PLUS PART # **SLADC12-35J**

NAPA PART # **BAT 8227**

ADVANCE AUTO PART **U1-2**

HYDRAULIC OIL 1-GALLON PREMIUM CLEAR
AW32 OR BETTER

DO NOT USE ATF (AUTOMATIC TRANSMISSION
FLUID) OR ANY RED FLUID OF ANY TYPE
THIS WILL VOID THE WARRANTY ON THE
CYLINDERS/ PUMP/ HOSES /ETC.

WHAT ARE THE LIFTING CAPABILITIES?

4500LBS

WHAT HYDRAULIC SYSTEM DO YOU USE?

POWER UP/ POWER DOWN HYDRAULIC
SYSTEM

CAN I WASH MY CAR ON THE LIFT?

YES, BUT DO NOT PUT DIRECT WATER
PRESSURE ON THE CYLINDER SEALS

CAN I LEAVE MY CAR ON THE LIFT DURING THE WEEK?

YES. THERE IS NO LIMIT TO THE DURATION
OF TIME THE CAR CAN STAY ON THE LIFT

HOW MUCH DOES THE LIFT WEIGH?

67LBS

HOW MUCH DOES THE PUMP BOX ASSEMBLY WEIGH?

65LBS, BUT IT IS ALL HOUSED IN A COMPACT ROLL
AROUND TOOLBOX

WHAT ARE THE SAFETY FEATURES?

WITH OUR UNIT BEING POWER UP/ POWER
DOWN WE ARE ABLE TO GO PAST 90
DEGREES. WHEN THE LIFT IS ALL THE WAY UP
IT IS LOCKED. ALL LIFTS HAVE A BATTERY
DISCONNECT FEATURE AS WELL

WHAT ARE THE STANDARD DIMENSIONS?

- 41 INCHES OVERALL WIDTH
- 46.75 INCHES LONG
- 3 INCHES TALL WHEN COLLAPSED
- 32 INCHES CENTER TO CENTER



Contact
Info@tricontoolinc.com

CELL: 770-787-1002
OFFICE: 770-898-3907
171 Maranatha Road, McDonough, GA. 30252

WHO IS DIRTCARLIFT?

DirtCarLift.com was established in 2013. The company was built on a need for a better, faster, and safer way to service the racecar at the track or around the shop.

We now have thousands of clients spanning multiple divisions across the U.S, Australia, The Netherlands & Canada.

We pride ourselves in manufacturing a top of line all CNC machined, Power up/Power down, 4500lb lifting capacity hydraulic pit lift that is backed by phenomenal customer service.

DirtCarLift.com is also a proud marketing partner with events and series, which include the Dirt Million, VP Racing Fuels Gateway Dirt Nationals, World of Outlaws, Lucas Oil, Monster Mini Stock Series, Thunder Series, Red Clay 602 Series and many more!



X Series Assembly



Eco Assembly